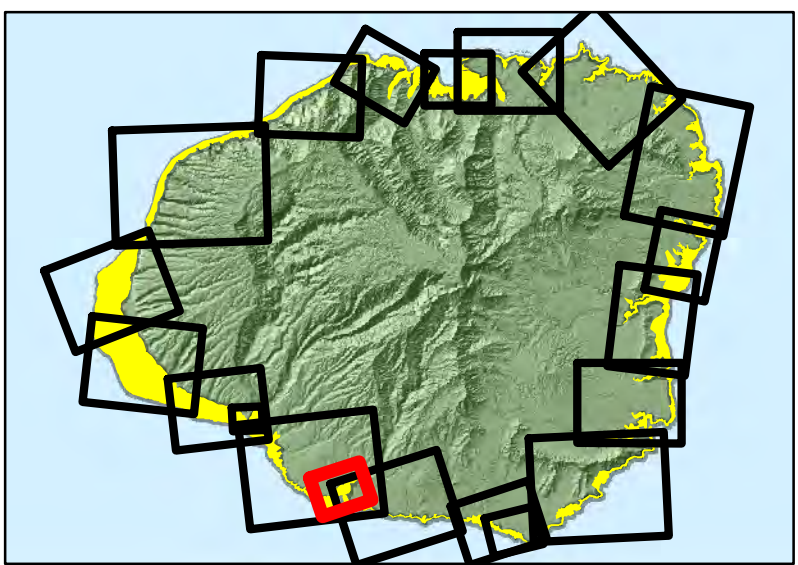
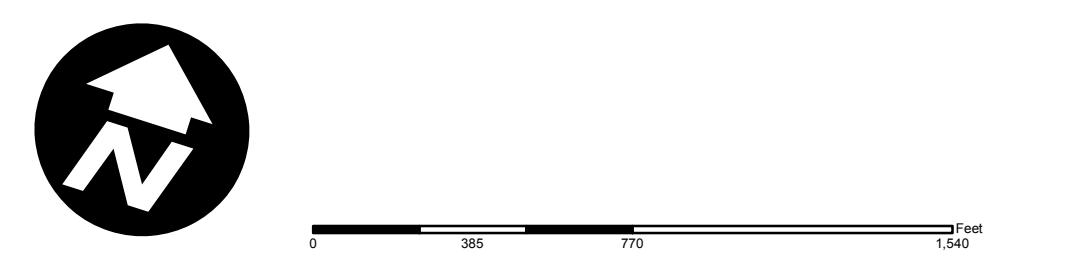


Port Allen  
Map 16

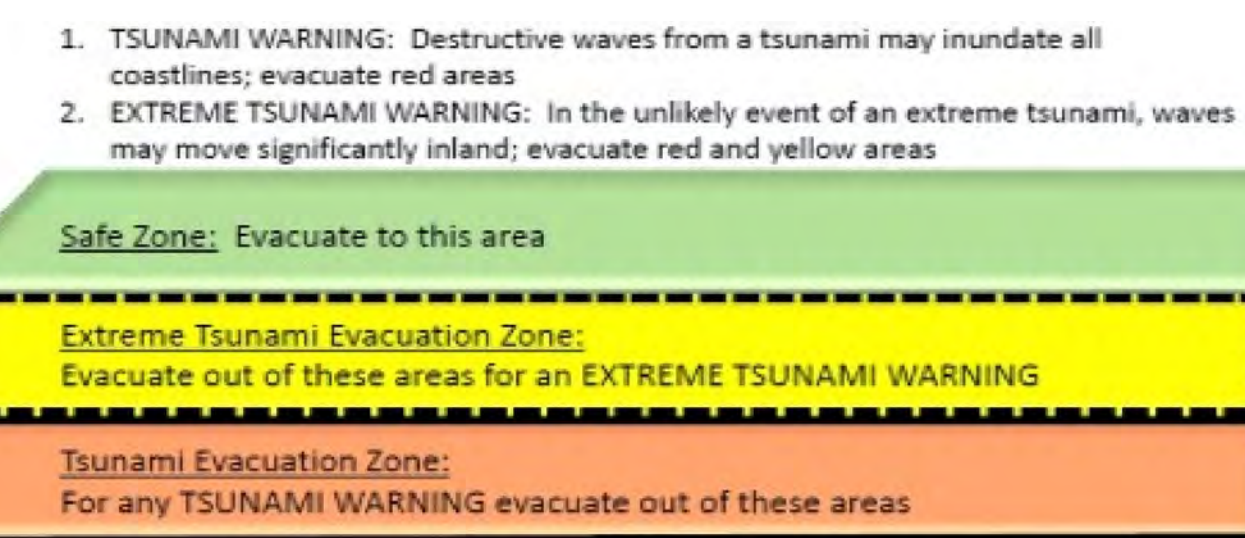
Note: Data represented on this map is not intended to replace site survey  
 Copyright Kauai County All Rights Reserved 2016 (Original Map format was created by CCH © 2015)  
 Date Prepared Jan 2016 - GAJ



\*For most Tsunami Warnings, evacuate out of the red zone; in the unlikely case of an "Extreme Tsunami Warning", evacuate out of the red and yellow zones  
 \*Remain at least 100 feet away from inland waterways and marinas connected to the ocean due to wave surges and possible flooding  
 \*Boaters should move vessels to at least 50 fathoms (300 ft) deep and 2 miles away from harbor entrances; follow all directions from the Captain of the Port



\*Structural steel or reinforced concrete buildings of ten or more stories provide increased protection on or above the fourth floor; if you are caught near the shoreline consider using vertical evacuation  
 \*These maps do not consider the destructive effects of a locally generated tsunami. If you feel shaking, move inland immediately, well inland from the red tsunami evacuation zone  
 \*The evacuation zone is a guideline and should be considered the minimum safe evacuation distance



**Legend**

- Fire Station
- Hospital
- EMS
- Police Station
- Schools
- Structures/Buildings (Large)
- Safe Zone
- Extreme Tsunami Evacuation Zone
- Tsunami Evacuation Layer
- Street
- Major Street
- Coastline

