

geometrician

A S S O C I A T E S , L L C

integrating geographic science and planning

phone: (808) 969-7090 fax: (866) 316-6988 PO Box 396 Hilo Hawaii 96721
rterry@hawaii.rr.com

December 9, 2015

Dear Agency or Organization Official:

Subject: Early Consultation for Environmental Assessment for HE-01 Reorganize Water System – Pipeline Connecting Hanapepe and Eleele (Kaumualii Highway 16-inch Main and Emergency Pump Connection), and HE-10 Hanapepe Road 6-inch Main Replacement, Hanapepe-Eleele Water Systems, Waimea and Koloa Districts, Island of Kaua‘i

I am in the process of preparing a Draft Environmental Assessment (EA) for a proposed County of Kaua‘i activity, in compliance with Chapter 343, HRS, and Title 11, Chapter 200, HAR.

The County of Kaua‘i, Department of Water (DOW), plans to implement the subject improvement projects. Both have been specifically identified in the County of Kaua‘i Water Master Plan 2020 (see attached map for depiction of current expected route, which may be adjusted).

- The “HE-01 Reorganize Water System” project is proposed in order to optimize the function of the Hanapepe and Eleele Water systems by providing critical redundancy, but it is primarily intended to decrease energy consumption and reduce energy costs to DOW customers.
- The Water Plan 2020 specifically identifies the project as involving installation of new waterlines along Kaumualii Highway to interconnect the lower Hanapepe and lower Eleele water systems. The connecting pipeline will join the systems below the pressure relieve valve (PRV) on Waiola Road. A trailer-mounted booster pump will allow the County to boost water from the Hanapepe 212’ system to the Eleele 340’ system to provide an alternative source of water for Eleele.
- DOW has determined that the project is not exempt from the preparation of an EA, and is acting as the proposing and approving agency for the EA in the context of Chapter 343, HRS.
- As part of the separately needed “HE-10 Hanapepe Road 6-inch Main Replacement” project, DOW is planning to replace the existing 6-inch and 4-inch mains along Hanapepe Road with a 12-inch main. This element will also be included in the EA.
- The replacement waterline will cross Hanapepe Stream at the Hanapepe Bridge, which has been determined to have high preservation value as a historic property.
- No work within waters of the U.S. is expected to be necessary.

The areas of investigation in the Environmental Assessment will include but not be limited to the following: water quality assurance, wastewater treatment, flora, fauna, ecosystems, traffic, geology,

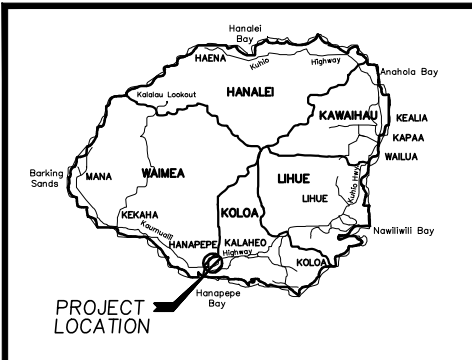
soils, hazards, flooding, drainage, social/community conditions, cultural resources, historic sites, and economic impacts.

I would appreciate your comments on any special environmental conditions or impacts related to the development. Please contact me at 808-969-7090 (Hilo) if you have any questions or require clarification. Kindly indicate whether you wish to receive a copy of the EA when completed.

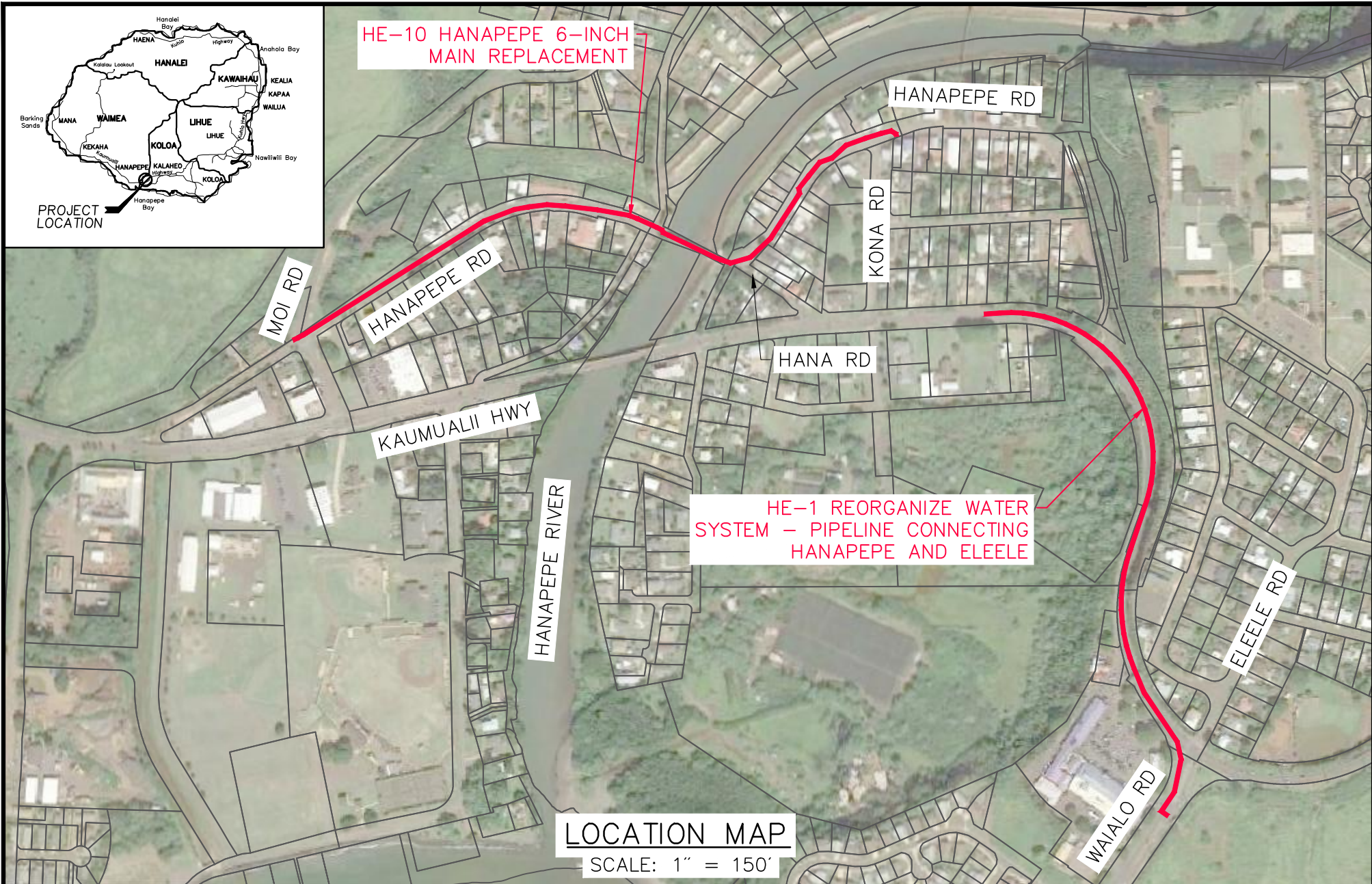
Sincerely,

A handwritten signature in black ink that reads "Ron Terry". The signature is written in a cursive style with a large, sweeping flourish at the end.

Ron Terry, Principal
Geometrician Associates



HE-10 HANAPEPE 6-INCH MAIN REPLACEMENT



LOCATION MAP
SCALE: 1" = 150'



PIPELINE CONNECTING HANAPEPE AND ELEELE, HANAPEPE ROAD 6" MAIN REPLACEMENT

LOCATION MAP

EXHIBIT

1